

Dear Parents,

I would like to take this opportunity to welcome you to Albany Creek State School (ACSS). My name is Tina Mortensen and I am the Defence School Mentor (DSM) for ACSS. At ACSS our school motto is a sound body in a sound mind and our aim is to provide quality education in an open and caring environment. To assist with the unique needs of defence families a DSM has been employed at our school.

As the DSM I monitor the social, emotional and academic needs of Australian Defence Force children at ACSS. I assist students in class who may need additional support and ensure that they settle in once arriving at ACSS. The DSM is an employee of the school, with funding provided annually from the Department of Defence to facilitate the best possible educational outcome for children of Defence members. This funding program is administered by the Defence Community Organisation (DCO) and recognises the partnership between education authorities, schools and Defence to support Defence members and their families.

The DSM is not a teacher but a member of the school team. The position was created as it was recognised that some children experience difficulties academically and socially each time they move school. The Defence School Mentor Program has introduced a range of programs to support defence families. Some of these include:

- Organise activities to Welcome and Farewell ADF Families. Get to know you BBQ at beginning of the year and farewell functions at the end of year.
- Monitor new children in the playground and help them when necessary to form friendships.
- Help families settle into the school community, informing them of local facilities and after school programs available for children.
- Monitoring the social, emotional, academic and wellbeing of defence students.
- Help the school to understand the special needs of ADF parents and their children.
- Adopting a buddy system where new students are being cared for by other students.
- Provide support during times of parental absence through a range of activities and programs.
- Help families and children develop strategies to successfully integrate into the school community.
- Working with School Chaplain to set up support groups for children when needed.

- Help school commemorate special events such as ANZAC Day and Remembrance Day.
- Assist families collect work portfolios and academic records or reports for a new school.
- Creating a safe place for children to attend when they are worried or anxious.
- Provide opportunity for defence students to take on leadership such roles.

As an ex defence force member I am aware of the hardships and sacrifices that are placed upon defence families and understand that moving schools can be quite daunting for children and their parents.

My aim is to make sure that your children are settling into school, forming friendships and achieving to their best abilities. As a Defence family you have access to a wide variety of programs that have been specifically set up for Defence families.

As part of the DSM program a Welcome Pack for Parents is attached. It contains information on ACSS, local facilities, attractions and services. At ACSS students are made to feel welcome and I ensure that they are settling into their new school. There are several activities which your child may participate in at lunch times, which include, hall days, permaculture garden, PAL (Peer Activity Leaders), playing in playgrounds, library (Air-conditioned), multi-purpose Courts and oval for Grades 4 and above and activities at The Hive on selected days. A timetable will be on the door for each Term.

My room is located in the middle room of A Block (downstairs) and is called “The Hive”, and is shared with the school Chaplain. At the Hive students are able to pop in and say hi or come to have a chat if they are having a bad day. At the Hive we encourage students to “be the best that they can be”. Activities are held at Big Lunch throughout the week and include art & craft, board games, cooking and outdoor games, with the aim of forming friendships. Children are encouraged to come along if they wish and bring a friend.

Assistance is also available when a parent is deployed. If a parent is to be deployed for a long period of time Journals can be made. These make a lovely keepsake item and something special that they can share with Mum or Dad when they return home. Diary entries are regularly made and pictures and drawings added. This also gives an opportunity for your child to express any concerns they may have. E-mails to Mum or Dad can also be sent for shorter periods of absences. Welcome Home signs are also made, which the children really enjoy making. The important thing to remember is to let me know if they are away. A note can always be left at the office.

At ACSS our school Chaplain may also offer support to your child if needed. This is done in a relaxed atmosphere and a card game or two is quite often played while they chat happily away. Permission forms will need to be filled out prior, for any further questions please ask.

Our Farewell Program includes a special memories book with messages and pictures from students and teachers and a morning tea. This booklet is something they will treasure, so please let me know in advance when they will be leaving as they take a few weeks to put together.

The Education Assistance Scheme (EAS) can provide assistance towards the costs of tutoring. This scheme is funded by Defence Community Organisation and is aimed at minimising the disruption of a child's schooling as a result of a posting. The entitlement is available within 18 months at a new school, for 14 weeks, at one hour per week per subject. For further information please contact the Defence Families Helpline.

There is a Support Group for Albany Creek Defence families. This is a closed Facebook group to connect Defence families and offer support whilst being posted to Brisbane and is administrated by parent representatives. It is open to all Albany Creek State School Defence families. Please search for **“Albany Creek Defence Families”**.

The main form of communication will be sent home via “Seesaw”, this will include events and images. This is a great platform to communicate quickly and easily. You will receive an invitation to join and will have a family account. All formal communication will be sent via email or sent home. Please ensure that your email address is up to date with the office.

Your child will receive a Welcome Package, take the time to look over this and familiarise them with what happens at our school. At the Hive we encourage our students “to bee the best that they can be”. This aligns with our or behavior management policy of Buzza Bee, which is Be Responsible, Be Respectable, Be a Learner and Be Safe.

My time at school is shared with the two roles that I have, DSM and a Prep Teacher Aide. This allows me to connect with the school community on a larger scale. I am available Monday to Friday so please don't hesitate to contact me if you have concerns on 3264 0111 or email I have an open door policy in the mornings before and after school, so feel free to pop in to The Hive at any time.
tmort37@eq.edu.au.

Warm Regards,

Tina Mortensen
Defence School Mentor
Albany Creek State School



DEFENCE INFORMATION

Defence Community Organisation (DCO) provides a broad range of individual and program related services to the ADF community. These services aim to support ADF families to balance the demands of military service with personal and family commitments.

The Defence Family Helpline is your first point of call for support, information and connection with your community, including your local DCO team. The Helpline is available 24/7 and is staffed by qualified human services professional including social workers and psychologists.

The best way to access any of these services is to contact the Defence Family Helpline on **1800 624 608** or via email DefenceFamilyHelpline@defence.gov.au and receive a response within 24 hours.

National Welfare Coordination Centre (NWCC)

In conjunction with the Defence Family Helpline the National Welfare Coordination Centre provides a 24/7 information and referral service for families of deployed ADF members. The NWCC is a part of the Defence Community Organisation and is staffed by Service personnel who can help with deployment queries such as mailing addresses and postal regulations, give you current information about operations, and pass urgent information to the deployed member. The NWCC website also has links to useful information for families of deployed members. 1800 624 608
nwcc.australia@defence.gov.au www.defence.gov.au/nwcc

Global Operations

Outlines the current operations in action overseas or within Australia
www.defence.gov.au/Operations

DEFENCE PROGRAMS AND ASSITANCE FOR FAMILIES

Defence Community Organisation (DCO) and Defence have a number of support programs and services available to families.

Educational Liaison Officers (EDLOs)

Regional Education Liaison Officers (EDLOs) are professionally trained teachers who understand both the different State and Territory education systems and the Defence lifestyle. They can advise Defence families and children on education issues, particularly related to relocating. EDLOs can assist with changing schools between the various State and Territory primary, secondary and tertiary education systems.

EDLOs are linked to schools and education systems, working to raise the issues that affect Defence families and ensure that equity of educational opportunity is available to all mobile Defence children.

The contact number for the EDLO at Brisbane is Mrs Christine Jones 3354 0554.

Education Assistance Scheme (EAS)

Provides financial support for additional tuition when changing schools on posting. Eligible students are able entitled to one per week per subject and need to apply within 18 months of posting to a new locality. Parents will need to obtain a teachers signature to apply for tutoring. Members can access web form AD301 on line or refer to PACMAN Vol 2, Ch 8, Part 4.

For further information contact DefenceFamilyHelpline@defence.gov.au or 1800 624 608.

Dependents with Special Needs (DWSN)

The definition of special needs includes children and adults, and covers a wide spectrum of cases including physical, intellectual, sensory, learning or behavioural difficulties, or psychiatric illnesses or disorders. It also includes academically gifted or talented children.

To gain formal recognition, you will need to fill in a form specifying the nature of the special needs case and requirements. All special needs must be assessed or recognised by a specialist medical practitioner or psychologist. You will then need to submit the application to the DefenceFamilyHelpline@defence.gov.au.

Families may receive education assistance with access to programs or services that your dependent requires which are not available from the new school or other government agencies. This may include:

- Funding for a therapy service or tuition not provided at the school but critical to educational progress,
- Assessment of needs, toward development of an educational program, or
- Reimbursement of private schooling costs, where a necessary special program is only available at a private school.

DWSN provides a range of supports to assist families relocate on posting for a dependent with special needs. The application process is completed prior to posting. Families can find information on the DCO website www.defence.gov.au/dco or PACMAN Vol 2, Ch 8, Part 6

Emergency Support for Families Scheme (ESFS)

DCO provides a range of practical and emotional support programs for families facing emergency or crisis, including assistance in times of illness, injury, domestic crisis or bereavement. There is a range of supports to families if they face an emergency while the member is deployed. A social work assessment is required. Families can apply through their local DCO office. Members can refer to PACMAN Vol2, Ch 8, Part 5

Partner Employment and Education program (PEEP)

Defence Community Organisation's employment support program for ADF partners recognises the disruption relocation can have on a partner's employment.

The need to relocate with your partner on posting is an integral part of the Defence lifestyle and can interrupt your employment. If you're posting to a new location or you have just posted, and you're an ADF partner looking for work, help is available.

PEEP provides financial assistance for Defence spouses to access education or employment assistance on posting. Application process involved. Information is available on the DCO website: www.defence.gov.au/dco

SMART Programs

The SMART suite of programs help Defence families develop their resilience, providing them with the psychological resources to manage the military way of life. Increasing your 'psychological resilience' means that despite experiencing frustrations and challenging circumstances, you can still maintain an optimistic outlook and keep going.

The SMART programs teach you a series of skills including grounding techniques, progressive muscle relaxation, changing self-talk, problem solving, and expressing emotions. During a SMART session participants will also be given information and resources to connect them with valuable local community resources. The programs are delivered by local Defence Social Workers in small group sessions, and provide practical tips and techniques to help manage stressful situations.

To sign up for any of the SMART sessions in your region, or to find out more information, contact the all-hours Defence Family Helpline DefenceFamilyHelpline@defence.gov.au or 1800 624 608.

Family SMART

Family SMART is a series of group programs designed to help the partners of ADF members identify and build on their strengths, learn techniques to cope with the stressors and challenges of the military lifestyle, and become more resilient, self-reliant and proactive. The programs target challenging aspects of Defence life such as deployment, relocations, partner absence from home, or reuniting with a partner who is returning after a long time away.



Teen SMART

Teen SMART workshops are for Defence teenagers to help them manage issues arising from deployment and relocation.

During the workshops, Defence teenagers can meet and share their stories about being part of a military family. They can also learn some ideas and tactics to help them stay

connected to their parents while they are away on deployment, and meet new friends when they move to a new posting location.

The workshop will also cover other things, like managing change and coping when feeling stressed out. There will be some tips and hints for handling emotions, and some great relaxation techniques, too.

Kid SMART

Kid SMART are a set of four-week programs for primary aged kids to help them manage issues arising from posting, relocation and deployment. The Kid SMART mascots, Tyler Turtle and Sam Super, will help kids learn how to manage change, stay connected with friends and meet new people.



The workshops will also cover other things, like helping children to cope when feeling stressed or anxious, particularly during times of parental absence and deployment. Kids can learn some techniques for handling emotions and relaxation, too.

Sessions are once a week for 1 to 1.5 hours per session and all children receive a story book to take home.

Defence Families of Australia

Defence families can be described as a diverse group of people that just happen to care deeply for someone in the Australian Defence Force (ADF).

The team at Defence Families of Australia (DFA) are all partners of current serving ADF members, which gives us a unique insight into the needs of future policy affecting Defence families.

For further information visit <https://dfa.org.au/>

Visit the DCO Facebook page

'Like' the DCO Facebook page www.facebook.com/defencecommunityorganisation to receive information about support services for Defence families, links with community organisations, and event information for regional and national DCO-run events.

OTHER ORGANISATIONS THAT SUPPORT DEFENCE FAMILIES

Soldier On

Soldier On staff work side by side with individuals and families, to strengthen resilience and develop meaningful connections with family members, mates, and the

local community through a diverse range of health and wellbeing services, employment opportunities, learning and education programs, and participation in community, social, and sporting activities

For further information visit <https://soldieron.org.au/>

Kookaburra Kids

Kookaburra Kids is **free** program for children, aged 8 – 18 years old who are living in families affected by mental illness. They are committed to delivering programs that build resilience, give hope and provide kids with the opportunity to learn about mental illness and reach their potential. Giving kids living in families affected by mental illness the chance to just be kids and have FUN is an important part of all our programs,

Whilst there is an allowance for serving and ex-serving defence families it is also open to anyone in the community. This includes partners of defence members.

For further information visit <https://kookaburrakids.org.au/>

RSL

RSL Queensland helps veterans and the broader Defence family in real and practical ways, whether they are members or not.

Our services range from assisting with DVA claims to funding vital research into PTSD and veteran mental health, from easing the transition to civilian life to providing opportunities for members of Queensland's Defence family to connect with each other.

Some of their services include employment programs, financial assistance, scholarship programs for ex defence, partners of serving members and veteran's dependents.

For further information visit <https://www.rslqld.org/>

Open Arms (formerly known as Veterans & Families Counselling)

Open Arms offers Support and counselling for current and ex-serving ADF personnel and their families (including children) is available through Open Arms. They can provide you with **free** confidential counselling, to support mental health and wellbeing.

Open Arms provides counselling services that can help you build strong and healthy relationships at all stages of family life, including:

- The absence of a parent during deployment, and adjusting when they return home
- Helping children with concerns around changes and stressors like making friends at a new school

- Understanding, identifying and working through trauma
- Transitioning from the Australian Defence Force to civilian life
- Working through relationship breakdowns and challenges
- Building a blended family
- Supporting the family of a serving member who has died.

All Open Arms counsellors understand military culture, the unique demands of military service and its impact on military families. Some counsellors have had military experience themselves.

For further information: <https://www.openarms.gov.au/> or phone 1800 011 046

USEFUL DEFENCE CONTACTS

Defence Community Organisation www.defence.gov.au/dco

Defence Families Helpline 1800 624 608 DefenceFamilyHelpline@defence.gov.au

Defence Housing Australia 139342 www.dha.gov.au

TOLL 1800 819 167 www.tollgroup.com/tolltransitions

Defence Families of Australia (DFA) 1800 100 509 www.dfa.org.au

Defence Special Needs Support Group (DSNSG) 1800 067 67 www.dsnsng.org.au

Open Arms Veterans and Families Counselling 1800 011 046 www.openarms.gov.au/

Beyond Blue 1300 224 636 www.beyondblue.org.au

Kids Help Line 1800 551 80 www.kidshelp.com.au

Lifeline 131 114 www.lifeline.org.au

Mensline Australia 1300 789 978 www.mensline.org.au

1800 RESPECT www.1800respect.org.au

Gallipoli Barracks Community Centre 0439 814 702
www.gallipolibarrackscommunitycentre.com.au/

Mates 4 Mates 1300 462 837 mates4mates.org

RSL QLD 13 47 75 www.rslqld.org/



SCHOOL INFORMATION

ALBANY CREEK STATE SCHOOL Prep to Year 6 - An Independent State School



School Address: 696 Albany Creek Rd
Albany Creek QLD 4035

Phone Number



3264 0111

Student Absence

3264 0160 or via QPARENTS app



<http://www.albacreess.eq.edu.au>



acss@albacreess.eq.edu.au



Albany Creek SS@AlbanyCreekSS



AlbanyCreekSS P&C



Please go to website to subscribe to school newsletter

Principal:

Mrs Marie Berriman

Deputy Principal:

Ms Debbie Mill

Deputy Principal:

Mrs Melissa Dickson-Ford

Deputy Principal:

Ms Anthea Blackburn

Head of Special Education:

Mr Jason Glancy

DAILY SCHOOL ROUTINE

Bell Times:

8.45 am	First Bell - move to rooms
8.55 am	Commencement of school
10.55 - 11.25 am	Little Lunch
1.00 - 1.40 pm	Big Lunch
3.00pm	Dismissal (Prep - 2.50pm)

QUEENSLAND SCHOOL CALENDER 2021

Term 1: Wednesday 27th January – Thursday 1st April

Term 2: Monday 19th April - Friday 25th June

Term 3: Monday 12th July - Friday 17th September

Term 4: Tuesday 5th October - Friday 10th December

ASSEMBLY

Every Thursday morning at 9.00 a.m. the whole school gathers for Assembly. This Assembly is a tradition in the school and is an important sharing session. Classes take turns to present an item. The Assembly also features the School Song and Presentations to Pupils.

PARADES

Each Monday afternoon at 2.15pm, Prep to Year 2 gather for messages and Buzza Awards. The School song and Prayer is listed below.

The School Song

Sung to Marine's Hymn

*Let us stand up straight to honour
The school of which we're one
Children growing strong to conquer
A world that is ours to come.
Years of toil and play and friendship,
Growing strong in all we seek.
Friends together, share together –
Children are one at Albany Creek*

The School Prayer

*Oh Lord, we thank you for this day
And for the chance you give
For us to learn and grow and play
And for the life we live.
We thank you for Adults who care
Who watch and guide and seek
And find the best for us to share.
Bless us ... at Albany Creek.*

AMEN.

In an endeavour to achieve the intent of the school motto 'A Sound Mind in a Sound Body' and other school objectives children are encouraged to be pro-active rather than reactive in all facets of school life and especially in the traditions which have developed over the years. These include:

- Speaking Competition (Years 4- 6)
- Fancy Dress (Years 1 & 2)
- Interhouse & Interschool Sports-
Cricket, netball, rugby league, soccer
- Sport & Leisure Clubs (Years 4 -6)
- Arts & Music Evening
- Kerribee Concert (School concert)
(Years 4 – 6)
- Japanese Speaking Competition (Year 5- 6)
- Bush Dance (Years 3 & 4)
- Music camp (Years 3-6)
- Carols by Torchlight (Years 1 & 2)
- Interhouse & Interschool Athletics
- Disco's
- Swimming Carnivals
- Instrumental Music Program

PASTORAL CARE

Albany Creek is fortunate to have a Chaplain at our school that is affectionately known as Chappy. The chaplain provides counselling, pastoral care and support to students and staff. Families are able to access Chaplaincy services by obtaining a permission form. The Chaplain shares a room with the DSM and works as part of the student services team.

CAMPS & EXCURSIONS

During the year Albany Creek offers camps for Years 4, 5 & 6. At present the following camps are available, but are subject to change.

Year 4 -	Camp Warrawee
Year 5 -	Tallebudgera
Year 6	Sydney/Canberra

Excursions and activities are held throughout the year and advertised in the “Creek Weekly” (school newsletter). Some include Pirates Day,, Teddy Bears Picnic, and museum visits.

“BUDDY” READING

Through Pastoral Care, children from classes in the Upper part of the school "adopt" classes in the Lower school. These older children help the younger ones with reading, writing, games etc. It has proved to be most beneficial to both classes.

BAND AND CHOIR

A full time music specialist is attached to this school. Instrumental teachers visit the school and instruct in woodwind, percussion, brass and string. Tuition can commence in Year 5, for woodwind, percussion, brass and Year 3 for strings.

School choirs and bands function within the school and children are encouraged to join either the choir or band or both.

- | | |
|-------------------|-------------------|
| • Junior Choir | • Senior Choir |
| • Recorder Band | • Concert Band |
| • String Assemble | • Percussion Band |

SCHOOL SPORTS

Interhouse and interschool competitions are conducted in season. Major sports played at present include Soccer, Netball, Softball, Cricket, Rugby League and Touch Football.

Junior Sports day is for Prep, Years 1 and 2, and Senior Sports day is for Years 3-6. House team colours are as follows:

- | | |
|-------------------|------------------|
| • Cash - Red | • Joyner - Green |
| • Leitch - Yellow | • Eaton - Blue |

If there are 2 or more children from the same family, all are placed in the same house.

A Swimming carnival is held in Term 4 for Years 4 - 6. Children have a choice of entering an event and earning points for their team (swim 25 metres) or enter age champion events and swim 50 metres.

Sports Teams War Cries

JOYNER

North, South, East, West
We're the ones that are the best.
Who are we, we're the greens.
We're the best of all the teams.
J - O - Y - N - E - R,
Yeah, Joyner!



CASH

Dollars, Dollars, Cents, Cents.
We are the best in all events,
On we go, full of dash,
Who are we, we are Cash.
C - A - S - H,
Yeah, Cash!



EATON

Eaton, Eaton are the best.
Eaton, Easton never rest.
We always try no matter what,
So, on we go and beat the lot
E - A - T - O - N,
Yeah Eaton!



LEITCH

Extra, extra, real all about it.
We've got the team and we're proud to shout it.
We're rough, We're tough,
We're hard to bluff,
So come on Leitch, do your Stuff.
L - E - I - T - C - H,
Yeah, Leitch



PERMACULTURE

Within our school grounds teachers and students have established a permaculture garden which is available at big lunch for everyone to enjoy. Activities include: compost making, planting seeds and seedlings, harvesting fruit and vegetables grown organically by the children, and establishing new gardens. The children are also responsible for caring for the chickens, worm farm, tadpoles and native bees that are housed within the garden confines. Some children are regular helpers, while others attend at random. All are welcome and at the end of lunchtime the vegetables and fruit harvested that day are shared amongst the helpers present - much to the children's delight. Open Tuesday and Thursday at Big Lunch.

TUCKSHOP

The tuckshop is open Wednesday to Friday and offers a wide range of food lines. It operates during both the morning and lunch breaks. Mothers who wish to help in the tuckshop are always welcome. In addition the following items are available from the Tuckshop - school uniforms, school hats, school socks, and water proof library bags. Ordering for tuckshop can be done online by using flex schools. For further information go www.flexischools.com.au

LOST PROPERTY

A lost property box is held at the school near the toilets in the covered games area and parents are free to look in this for lost property.

BEFORE AND AFTER SCHOOL CARE

Before School Care is held between 6.30am - 8.45am Monday to Friday, after School Care is currently available in the afternoons (2.50pm - 6.00pm). It is a joint Y.M.C.A.- Albany Creek State School project catering for students from Prep to Year 6. Further information about this facility along with the necessary enrolment applications may be obtained from the school office or the Y.M.C.A Family Centre on 3264 4907 or via Quick Link on the schools website. Vacation care is available.

BUS SERVICE - three bus companies service the school: Thompson's Bus Services, Brisbane Bus Lines and Brisbane City Council.

Cashmere Bus (Thompson Bus Services) - This services Warner/Cashmere area and departs from our school at 3.05 pm.

Clear Mountain Bus (Thompson Bus Services) – This services Cashmere/Clear Mountain area and departs our school at 3.05 pm.

Brisbane Bus Lines – This services Eatons Hill/Draper area and departs from our school at 3.20 pm.

Brisbane City Council services Brendale and leaves from the bus stop in Wruck Crescent at approximately 3.15 pm.

The information listed above has been taken from the Student handbook and is only a brief description of the school and its facilities. For detailed information please refer to Student Handbook or visit www.albacreess.eq.edu.au.

QPARENTS

Our school has commenced an online portal called QPARENTS, it allows parents to connect instantly to our school to access and manage information about their child's student information. For further information contact the school office on 3264 0111 or visit <https://qpARENTS.qld.edu.au/#/about> or call 13QGOV (137468)

STUDENT BEHAVIOUR

Our Behaviour Management Statement: At Albany Creek we expect that everyone will think ahead and make responsible decisions that respect the rights, feelings, and safety for all concerned.

Underpinning this plan is the Albany Creek State School Positive behaviour Plan. This plan bases all behaviour around four key concepts: Be Responsible, Be Respectful, Be Safe and Be a Learner.

“Buzza” the bee embraces these characteristics and promotes and recognises positive behaviour displayed by students. Awards are received at assembly for those students demonstrating positive behaviour.



Further Information about our school can be located in the Albany Creek State School Handbook which can be located on the schools website or the school office.

THINGS TO DO AND SEE



There are plenty of things to do and see in and around Brisbane. Listed below are only some of the attractions and activities that are available. There are also great web sites available that you can access to give you some more great ideas,

- <http://brisbanekids.com.au/>
- <http://www.weekendnotes.com/brisbane/>
- <http://visitbrisbane.com.au>

PARKS

These are great parks to take the kids out for the day and all are within ½ hour drive. Parks located in Albany Creek and the surrounding Shire are listed on the 100 Parks & Reserves in Pine Reserves.

For further information visit www.moretonbay.qld.gov.au

Kids Space

Murphy Road, Chermside

John Goss Reserve

Maudrell Terrace, Chermside West

Teralba Park

Teralba Street, Everton Park



H.T. Ireland

Eatons Crossing Rd, Eatons Hill

Southbank Parklands

Southbank

Pine Rivers Park

Gympie Road, Strathpine

New Farm Park

Brunswick Street, New Farm

Lemke Park

Fredrick Drive, Albany Creek



Raven Street Reserve

Rode Rd, Mc Dowall

Grindstead Park

Shand Street, Stafford

Anzac Park

Dean Street, Mt Cootha

Frew Park

Frew St, Milton

REDCLIFFE SHIRE PARKS

Suttons Beach

Marine Parade, Redcliffe

Pelican Park

Hornibrook Esplanade, Redcliffe

Scarborough Beach Park

Landsborough Avenue, Scarborough

NORTH PINE DAM PARKS

North Pine Dam

Forgan Road Mt Samson,

Bullocky Rest Reserve,

Forgan Road, Joyner



CITY ATTRACTIONS

Brisbane Planetarium

Mt Cootha Rd
Ph No: 3403 2535



Queensland Museum

Cnr Grey and Melbourne Streets
South Bank, Ph No: 3480 7555

Sciencentre

Cnr Grey and Melbourne Streets,
South Bank Ph No: 3220 0166

Queensland Art Gallery

Melbourne Rd, South Brisbane
Ph No: 3840 7322

OTHER ATTRACTIONS

The Workshops Rail Museum

North St, Ipswich
Ph No: 3432 5100

Lone Pine Koala Sanctuary

Jesmond Rd, Fig Tree Pocket
Ph No: 3378 1366

NORTHSIDE ATTRACTIONS

North Pine Country Park

Dayboro Rd, Kurwongbah

Alma Park Zoo

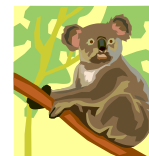
Alma Road, Dakabin Ph No: 3204 6566

Bracken Ridge Central Steam Railway

Mc Pherson Park, Denham Street,
Bracken Ridge
4th Sunday of every month, opens 10.00 am

Mt Samson Emu Farm

Winn Rd, Mt Samson
Ph No: 3289 4264



Osprey House Environmental Centre

Dohels Rock Rd, Griffin
Ph No: 3205 0529

Lyell Deer Farm

Foggs Rd, Mt Samson
Ph No: 3289 4270

Walkabout Creek & Wildlife Centre

Brisbane Park Headquarters
60 Mt Nebo Rd, The Gap
Ph No: 3300 4855
Ph No: 3865 51879

Boondall Wetlands

Bicentennial Road, Boondall
Ph No: 3865 51879

Welcome Horse Riding

Winn Rd, Mt Samson,
Ph No: 3289 4644

Slickers Horse Riding

Dunlop Lane, Dayboro,
Ph No: 3285 1446



PCYC

Police Citizens and Youth Club (PCYC) offers programmes such as rock climbing, gymnastics, karate, kindy gym and trampolining. Each centre offers a variety of programmes, listed below are the closest centres to Albany Creek:

Pine Rivers	Francis Rd, Bray Park	3205 3367
Arana Hills District	135a Oleria St, Arana Hills	3855 1980

INDOOR ACTIVITIES

Roller Skating

Skateaway –
(Centro Albany Creek)
Albany Creek Rd, Albany Creek
Ph No: 3325 1711

Brisbane Arts Theatre

(Children's Theatre Programme)
210 Petrie Terrace, Brisbane
Ph No: 3369 2344

Ten Pin Bowling

Westfield Shopping Centre, Strathpine
Albany Creek Road, Aspley

Ice Skating

2304 Sandgate Rd, Boondall
Ph No: 3865 1694



AQUATIC FUN

Albany Creek Leisure Centre

931 Old Northern Rd, Albany Creek
Ph No: 3264 9900

Chermside Aquatic Centre

375 Hamilton Rd, Chermside
Ph No: 3359 6134



Sandgate Swimming Pool Complex

231 Flinders Parade, Sandgate
Ph No: 3269 7946

Settlement Cove Lagoon

Cnr Redcliffe Parade and Anzac Avenue,
Redcliffe
(Lagoons, shades swimming area for little ones, parks and beach nearby)

Southbank

Southbank Parklands
(Artificial beaches, parks)

CINEMAS

Event Cinemas

Westfield Shopping Centre Strathpine, Chermside and North Lakes



South Bank Cinema Complex, (Discount Prices)

167 Grey St, South Bank, Ph No: 3899 3022 or <http://www.cineplex.com.au>

Hoyts Cinemas

Stafford Shopping Centre (Reclining Chairs)
400 Stafford Road, Stafford

GARDENS

Southbank Parklands,
South Bank

City Botanic Gardens
Entry points include, George,
Albert and Edward Streets

Roma Street Park Lands, Brisbane

Brisbane Botanic Gardens
Mt Cootha Rd, Toowong
(Planetarium and beautiful gardens)

MARKETS



Eat Street Markets	Hamilton	Fri – Sat 4.00pm – 10.00pm
North Pine Country Markets	Petrie	Sunday 8.00 am – 2.00 pm
Carseldine Markets	Carseldine	Saturday 6.00am – 12.00pm
Riverside & Eagle St Pier Market	City	Sunday 8.00 am – 3.00 pm
Brunswick Street Markets	Fortitude Valley	Saturday 8.00 am - 4.00 pm
Southbank Markets	Southbank	Friday 5.00 pm – 10.00 pm
		Saturday 11.00 am – 5.00 pm
		Sunday 9.00 am – 5.00 pm

For all of those shopperholics there is a Factory Direct Shopping Outlet, which is located at No 1 Airport Drive. Hundreds of specialist stores with factory direct and seconds available. There is also another Factory Direct outlet located at Pacific Harbour at the Gold Coast.

SHOPPING CENTRES



Albany Creek has a variety of shops and outlets providing residents with a great range of choice. The bigger shopping centres such as Westfield Strathpine and Westfield Chermside are only 15 minutes away. Below are various shopping centres and outlets, located within and around Albany Creek.

Woolworth's Shopping Village, South Pine Rd, Albany Creek

- Woolworth's
- Newsagent
- Chiropractic Centre
- Japanese Café
- Thai Restaurant
- Optometrist
- Bakery
- Bargains Central
- Bottle Shop
- Hair Dressers
- Domino Pizza
- Indian Restaurant

Albany Market Place, Albany Creek Rd, Albany Creek

- Night Owl
- ANZ Bank
- Indian Restaurant
- Pool Shop
- Chemist
- Beautician
- Fish & Chips
- Chinese Restaurant
- Cheesecake Shop
- Thai Restaurant
- Doctors
- Cafe
- Portobello Restaurant
- Bike Shop
- Bakery
- Real Estate Agent
- Butcher

Centro Albany, (including surrounding shops), Albany Creek Rd, Albany Creek

- Coles
- Post Office
- Baskin & Robbins
- Travel Agents
- Westpac Bank
- Real Estate Agent
- Speciality Stores
- Nando's Chicken
- Bakery
- Hairdressers
- Gym
- Indian Restaurant
- Chemist
- Barber
- Commonwealth Bank
- Skating
- Optometrist
- Bargain Plus
- Newsagent
- Suncorp Bank
- Dry Cleaners
- Key Cutting
- Japanese Restaurant

Westfield Shopping Centre, Gympie Rd, Strathpine

- Target
- Woolworth's
- Specialty stores
- BigW
- Post Office
- Cinemas
- Best and Less
- Medicare Office
- Bowling

Brookside Shopping Centre, 159 Osborne Rd, Mitchelton

- Big W
- Mr Toys
- Specialty Stores
- Myer
- Medicare Office
- Coles
- Post Office

Arana Hills Kmart Plaza, Patrick Rd, Arana Hills

- Kmart
- Specialty Stores
- Coles
- Bargain Plus
- Post Office
- Chemist

Hyper Market, Albany Creek Rd, Aspley

- Coles
- Aldi
- Kmart
- Woolworths
- Post Office
- Specialty Shops

Westfield Shopping Centre Chermside, Hamilton Rd, Chermside (largest in area)

Westfield Shopping Centre North Lakes, Anzac Avenue, North Lakes

Carseldine Homemaker Centre

- Bunnings
- Super Cheap
- Bedwares
- JB-Hi Fi
- Crazy Clarks
- Specialty Stores
- Good Guys
- Aldi Supermarket
- Chemist

RESTAURANTS

All of the restaurants listed below have play facilities for children, so you can relax and enjoy your meal while they play

Everton Park Tavern

101 Flockton Street, Everton Park
Ph No: 33532300

Albany Creek Tavern

730 Albany Creek Rd, Albany Creek Rd,
Ph No: 3264 1477

Kedron Wavell Services Club

Cnr Hamilton Rd & Kittyhawk St
Chermside, Ph No: 3359 9122

Samford Valley Hotel

Main St, Samford
Ph No: 3289 1212



Warner Tavern

2 Everest St, Warner
Ph No: 3882 2440

Eatons Hill Tavern

646 South Pine Road, Eatons Hill
Ph No: 3325 6777

FRASER ISLAND

Fraser Island is the largest sand island in the world. It has almost 200 lakes, most of them perfect for swimming. Lake Mc Kenzie is known as the mirror Lake and has crystal clear water. It has a variety of accommodation available from camping to cabins and resorts. You can do as little or as much as you like, activities to do include camping 4WD, bushwalking, fishing and bird watching. The island has is full of wildlife and includes wallabies, echidnas, dingoes various species of birds including the sea eagle. Fraser Island can be accessed by ferry or barge from Inskip Point, Hervey Bay Marina or River Heads.

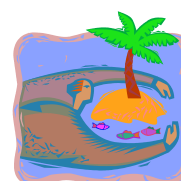
Access to the island is restricted to 4WD vehicles and permits are required for access and camping from the River Heads Information Kiosk, Hervey Bay Marina Kiosk and QPWS in Brisbane, Maryborough, Gympie and Rainbow Beach.



MORETON ISLAND

At Moreton Island you will find beautiful beaches, bushland, crystal clear lakes and camping grounds. Activities to do include, swimming, snorkelling, scuba diving, sand tobogganing, hand feeding dolphins, bird watching, bush walking, camping and 4WD. 4WD is essential for getting around and permit for access and camping is available from ferry operators. Moreton Island is accessible from Scarborough Boat Harbour at Redcliffe. For further information contact:

The Ranger, Moreton Island Recreation Area
Via Tangalooma Resort, Moreton Island
Ph No: 3408 2710



NORTH STRADBROKE ISLAND

North Stradbroke or “Straddie” as it is affectionately known has three townships, Dunwich, Amity Point and Point Lookout. There you will find beautiful beaches, and freshwater lakes. There are numerous camping grounds available, activities to do include sand boarding, sea kayaking, and 4WD discovery tours. The Visitor Information centre at Dunwich is a great source of information where you can obtain information about all the things that Stradbroke has to offer.

Stradbroke is accessible from Cleveland and offers a ferry service across to the island. For further information contact:

Stradbroke Ferries	Departs Toondah Harbour, Cleveland	Ph No 3286 2192
Stradbroke Flyers	Departs Toondah Harbour, Cleveland	Ph No 3286 2666

Contact Redland Tourism or North Stradbroke Island Visitors Centre for further information regarding camping permits, accommodation and bookings.

Redlands Tourism	152 Shore West, Cleveland	Ph No 3281 0057
Nth Stradbroke Visitors Centre	Junner Street, Dunwich,	Ph No 3409 9555

SUNSHINE COAST

Some of the best beaches on the Sunshine Coast are Laguna Bay, Noosa, Sunshine Beach, Peregrine, Coolool, Caloundra – Kings Beach, Dicky’s Beach, Moffat Bay, Mooloolaba, Maroochydore, Alexandra Headland and Currumbundi (great for little ones).

National Parks

The National Parks on the Sunshine Coast include Blackall Range, Glass House Mountains, Noosa National park, Coolool National park, Mapleton and Kondalilla National Parks.

Australia Zoo

Live shows daily where you can see crocodile, tigers, birds, koalas, snakes and loads more animals. Australia Zoo is located at Beerwah.



Aussieworld

Aussieworld is an amusement park, which includes an Aboriginal cultural centre where you can see Aboriginal dance or a cultural show with didgeridoo playing. Activities include a black smith demonstration, stock whip demonstration and sheep shearing.

Banana Bender Pub

Right next door to Aussieworld is the Banana Bender, a great Australian outback pub.

The Big Pineapple

The Big Pineapple houses a giant pineapple at the front entrance. The overgrown fibreglass pineapple houses a video display on tropical fruit growing. Take a ride on the Nutmobile or miniature cane train and see the plantation at work.

The Ginger Factory

The Ginger Factory is the world's largest Ginger processing factory, it has numerous rides and attractions including the historic cans train, a motor museum, dolls cottage, and Macadamia kitchen.

Go Karting

For some excitement visit the Big Kart Track and go kart till your hearts content.

Noosa

Hasting Street at Noosa is crammed with restaurants, cafes, boutiques and luxury holiday apartments. There is a great picnic spot at "The Spit" located at the end of Hasting Street. Enjoy lunch next to the Noosa River, which is a great little spot for young children to swim and play, or catch the waves on the surf side for a great day out.

Eumundi Markets

Great markets held on Saturday and Wednesday mornings located on the Main Street of Eumundi.



Strawberry Fields Farm

Located at Palmview off Bruce Highway Strawberry Fields allows you to pick your own strawberries. They also have a playground, café and homemade strawberry ice-cream. Check for picking season to avoid disappointment

The Queensland Air Museum

The Queensland Air Museum is a great place to visit for all plane loving kids of all ages. This is a collection of mostly military aircraft and memorabilia.

Superbee Honey Factory

The Superbee Honey Factory is an amusement park for children with fairytale attractions such as the Snow White and the Seven Dwarfs. There is a live beekeeping demonstration and over 28 varieties of honey on offer.

Top Shots Fun Park

Top Shots Fun Park is an amusement park for children with attractions that include mini golf, blaster boats, extreme trampolining and indoor rock climbing.

Under Water World

Underworld World offers a large variety of sea life displays and shows including "Seals Behaving Badly". Under Water World is located at the Mooloolaba Wharf.

For further information on the Sunshine Coast see www.sunshinecoast.com.au

GOLD COAST

Some of the best beaches at the Gold Coast include, Burleigh Heads, Palm Beach, Mermaid Beach, Main Beach and Surfers Paradise.

National parks

The Gold Coast offers tropical rainforest, which include Springbrook and Lamington National Parks, Mt Tambourine and Mt Warning.



Currumbin Sanctuary

Currumbin Sanctuary has the largest collections of Australian animals in the world. Feed the colourful lorikeets, see the kangaroos, wombats, wallabies, koalas, fresh water crocodiles and loads more animals.

Warner Brothers Movie World

Attractions include the Lethal Weapon Ride, Wild West Falls, Scooby Doo Spooky Coaster, Looney Tunes Village and the spectacular Main St parade where you can see all your favourite characters.

Sea World

Sea World is a great family day out. Attractions include the Polar Bears, Shark Bay, Dugong Discovery, a 4-D presentation, Cartoon Network Beach, Corkscrew Rollercoaster, Bermuda Triangle, Dolphin Cove Show, Quest for the Golden Seal, water slides and water-ski displays.

Wet'n'Wild Water World

For great fun Wet'n'wild has many attractions including Mammoth Falls, Terror Canyon, Supa 8 Aqua Tracer, Calypso Beach, the Giant Whirl Pool, Dive-in Movie and Tin Can Bay.

Outback Spectacular

The Australian Outback Spectacular is an Australiana dinner and show package featuring many Australian animals, songs and bush tucker. The show is located between Warner Bros. Movie World and Wet'n'Wild Water World at Oxenford on the Gold Coast.

Dream World

Attractions include Tiger Island, Wiggle World, Riverboat Cruise, Gold Rush Country, Koala and Kangaroo sanctuary, waterslides and loads of rides.

White Water World – (at Dreamworld)

White Water World is heated all year round and boasts the most extreme waterslides and family friendly attractions from the Wiggles and Nickelodeon.

For further information on the Gold Coast see www.tourismgoldcoast.com.au\

MORETON BAY REGIONAL COUNCIL

Pine Rivers District

Pine Rivers district has several train stations in the area; the closest to Albany Creek is Strathpine, Bald Hills or Enoggera. An average train ride to the city would take approximately 40 minutes from Strathpine or Bald Hills or alternatively there is a train station at Enoggera where it will only take you 15 minutes to get to the city.

To obtain current timetables and fare information, contact Transinfo on 131230 or www.transinfo.qld.gov.au. Buses also travel in around the shire and to the city.

Council's Libraries are located at:

- **Albany Creek Library**, 16 Ferguson Street, Albany Creek, Ph No: 3264 5267
- **Arana Hills Library**, Cobbity Crescent, Arana Hills, Ph No: 3351 3401
- **Kallangur Library**, 1480 Anzac Avenue, Kallangur, Ph No: 3204 4944
- **Strathpine Library**, Cnr Gympie & South Pine Roads, Ph No: 3490 6698

Council also provides a Toy Library, which is located within all Libraries and is open to all Library members. Items available for loan include toys, games, and puzzles suitable for children up to age 6.

Waste & Recycling

Green refuse bins are collected weekly, regardless of public holidays, and recycling bins with the yellow lid are emptied fortnightly, to find out your collection day contact Council on (07) 3480 6666 and ask for Pine Waste.

Pine Rivers Waste (Dump) is located on Bunya Road, at Bunya, and presently offers free dumping facilities, including recycling to all Pine Rivers residents. Proof of residency is required.

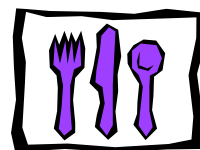
Local Facilities

Moreton Bay has variety of facilities on offer, listed below are a few:

- Environmental centres
- Bike Trails and shared walkways
- Canoe Trails
- Horse riding Trails
- Art Gallery and museum
- Markets
- Libraries
- Skate Parks
- Over 500 parks
- Markets
- Swimming Pools and leisure centres

For further information: www.moretonbay.qld.gov.au or phone 3480 6666.

RESTAURANTS & TAKEAWAY FOOD OUTLETS



Albany Court Chinese Restaurant	3264 1680
Albany Creek Tavern	3264 1477
Albany Forest Fish and Chips	3325 9232
Albany Creek Thai Restaurant	3325 1122
Bombay Bliss	3264 1510
Cheesecake Shop	3325 4334
Confucius Asian Cuisine	3264 3838
Coffee Club	33253020
Domino Pizza	131 888
Diggers Pies	3264 4652
Eaton's Hill Tavern	3325 6777
Everton Park Tavern	3353 2300
Fish Lips Fish & Chips	3851 1132
Kentucky Fried Chicken	3325 0588
Mc Donald's Albany Creek	3254 5264
Montiezumas Albany Creek	3325 2713
Nandos	3264 1248
Noodle Box	3325 5490
Phuket Kitchen	33255972
Pizza Hut Delivery & Takeaway	3892 1111
Pizza Capers	134PIZZA
Portabella	3264 8044
Thai Kasinee	38896606
Tsauru Japanese Café	3264 5188
Subway Albany Creek	3264 8800
Wheelers Bakery	3325 1400



COMMUNITY REGISTER

Albany Creek Police Station	3264 0599 / 3264 0521
Eatons Hill Fire Brigade	3264 5819

SPORTS CLUBS/ASSOCIATIONS

Albany Creek Cricket Club	3264 4039 / 3264 5993
ACE Netball Club	info@acenetball.com.au
Albany Creek Crushers Rugby League Club	3325 1422
Albany Creek Excelsior Club (Soccer)	3264 2885
Albany Creek Gymnastics Club	3881 1666
Albany Creek & Samford Softball Club	3205 2736
South Pine Sports Association	3325 2788
Albany Creek Swim Club	3264 1839
Albany Creek Junior Tennis Club (Woods Tennis)	3264 2011
Albany Creek Music	3264 6766
Guides (QLD)	3252 3061
Hockey (QLD)	3399 6577
Little Athletics (QLD)	3371 8253
Pine Rivers Hockey Club	0439 852 404
Pine Rivers Baseball Club	3353 4812
Playgroup Association (QLD)	3371 8253
Rugby League (QLD)	3858 5252
Skateaway – Albany Creek	3325 1711
Scouts (QLD)	3870 7000
Drama – Helen O’Grady	3353 0555

ASSOCIATIONS/SERVICE CLUBS

Albany Creek Garden Club	3886 1770 / 3264 1026
Albany Creek Apex	3264 5261 / 3264 3050
Lions Club of Albany Creek	3264 5680
Rotary Club of Albany Creek	3268 6655

MEDICAL CENTRES

Albany Hills Radius Centre	3264 0800
Albany Care 7 Day Medical Centre	3264 6632
Albany Place Family Medical Practice	3264 7600
Eatons Hill Family Practice	3325 4555

HOSPITALS

Royal Brisbane & Women’s Hospital	3636 8111 (Emergency Dept)
Royal Children’s Hospital	3636 3777 (Emergency Dept)
Holy Spirit Northside Private Hospital	3254 3133 (Emergency Dept)
Prince Charles Hospital	3350 8111 (Emergency Dept)
Redcliffe Hospital	3883 7777 (Emergency Dept)
North West Brisbane Private Hospital	3264 3133

CHIROPRACTORS

Albany Creek Chiropractic Clinic	3325 0222
Vitality Chiropractics	3325 0506

DENTISTS

Dental Hospital	3240 1444
Albany Dental Surgery	3264 1033
Albany Dental Clinic & Orthodontist	3264 5698
Dental Plus – Brendale	3889 8889

ORTHODONTIST

Shrine Orthodontist	38810165
Peter Mc Mahon	3325 0255

PHYSIOTHERPISTS

Action Physio (Debbie Bailey)	3264 1498
Albany Creek Physiotherapy & Sports Injury Clinic	3264 3448
Go2 Human Performance	3355 5540

MEDICARE

Chermside (Westfield Shopping Centre)	13 20 11
Strathpine (Westfield Shopping Centre)	13 20 11
Mitchelton (Brookside Shopping Centre)	13 11 20
See Medicare at www.hic.gov.au	

MORETON BAY SHIRE

Customer Service	3480 6666	
Albany Creek Community Centre	3264 1884	/ 3205 2955
Albany Creek Leisure Centre (Pool)	3264 9900	
Albany Creek Library	3264 5267	
Pine Rivers Community Health Centre	3881 9999	
Pine Waste Bunya	3851 3762	
Pound/RSPCA	3886 0357	

BRISBANE CITY COUNCIL

Customer Service	3408 8888
------------------	-----------

CENTRELINK

Chermside (next to Westfield Shopping Centre)	3247 0199
Strathpine (next to Pine Rivers Shire Council)	3480 1399
Visit Centre Link at www.centrelink.gov.au	

TRANSPORT

QR City Train	3606 5555
Bus & Ferry	131 230
Black & White Taxi	131 000
Yellow Cabs	131 924

SERVICES

Energex (Electricity)	13 12 53
Origin (Gas)	13 24 61
State emergency Services (SES)	3285 7899
Telstra	13 22 00
Optus	13 33 45

KINDERGARDENS / PRESCHOOLS

Albany Creek Kindergarten & Pre-school	3264 1838
Eatons Hill Community Kindergarten & Pre-School	3264 3455 / 3264 2287
Strathpine Kindergarten & Pre-school	3205 1447

CHILDCARE FACILITIES

Tadpoles Early Learning Centre Albany Creek	3325 2099
Albany Creek Day Care Centre	3264 2499
Mother Duck Eatons Hill	3264 6277

DANCE CENTRES

AMMA School of Dance	3353 0100
Dance Directions	3325 0498
Fitness and Dance	3285 7727
Desley Donaldson Ballet Academy	3264 1651

HARDWARE

Bunnings - Carseldine	3261 6999
Steve Jones – Albany Creek	3353 3566
Thrifty Link hardware – Brendale	3881 1530

SWIMMING

Albany Creek Leisure Centre (Lessons)	3264 9903
Albany Creek Swim Club	3264 5267

HAIR DRESSERS

Albany Hair Directions	3264 4311
En Vogue Hair	3325 5577
First Edition Hair Design	3264 3001
The Hairologists	3264 4100

PET CARE

RSPCA	3886 0357
-------	-----------

BOARDING KENNELS

Ace Boarding Kennels – Bald Hills	3261 1539
Ran'Dee Boarding Kennels and Cattery – Bracken Ridge	3269 4370
Samford Boarding Kennels and Cattery – Samford	3289 1600

DEFENCE TELEPHONE NUMBERS

Enoggera Switchboard	07 3332 5111
Victoria Barracks Switchboard	07 3332 5111
Defence Community Organisation (DCO)	07 3354 0500
Education Liaison Officer (EDLO)	07 3354 0554
Defence Families Helpline (24 hours)	1800 624 608

TINA'S TOP PICKS FOR KIDS

Dancing - AMMA School of Dance	3353 0100
Soccer - Albany Creek Excelsior Club (ACE)	3264 2885
Gymnastics – Albany Creek Gymnastics Club	3881 1666
Swimming – Albany Creek Leisure Centre	3264 9903
Rugby League – Albany Creek Crushers	3325 1422
Hockey – Pine Rivers Hockey Club	pinesainthockey.com.au
Little Athletics	3371 8253
Netball – Albany Creek Excelsior Club (ACE)	acenetball.com.au
Guides	3252 3061
Scouts	3870 7000
Woods Tennis	3264 2011

Albany Creek State School has no affiliation with any of the above listed services.

Resources

www.ourbrisbane.com.au

www.brisbanehinterland.com.au

www.sunshinecoast.com.au

www.moretonbay.qld.gov.au

www.tourismgoldcoast.com.au

www.albacreess.eq.edu.au

Useful Websites

- <http://brisbanekids.com.au/>
- <http://new2northside.com.au>
- <http://www.weekendnotes.com/brisbane/>
- <http://www.education.qld.gov.au>
- <http://www.defence.gov.au/dco> (DCO)
- <http://www.citysearch.com.au>
- <http://www.brisbane.qld.gov.au>
- <http://www.brisbanetourism.com.au>
- <http://www.defence.gov.au/army>
- <http://www.racq.com.au>
- <http://www.citytrain.com.au>
- <http://www.greatsoutheast.com.au>
- <http://www.tq.com.au> (Tourism Queensland)
- <http://www.dha.gov.au>
- <http://www.centro.com.au/CentroAlbany.htm>
- <http://brisbane.citysearch.com.au>
- <http://www.whereis.com.au>
- <http://www.transinfo.qld.gov.au>
- <http://www.centrelink.gov.au>
- <http://www.hic.gov.au> (Medicare)